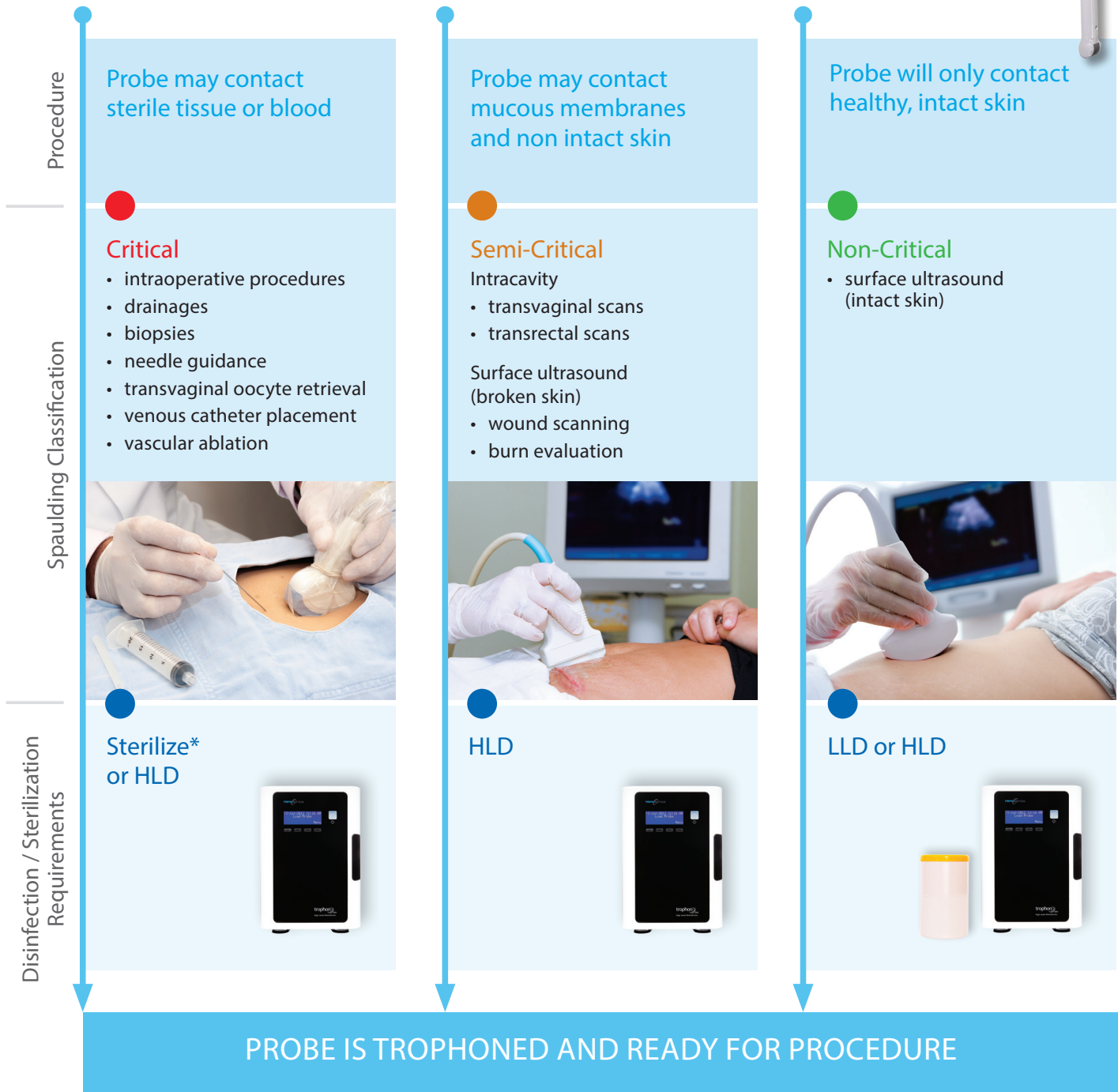


When to HLD with trophon®



WHAT PROCEDURE WILL YOUR PROBE BE USED FOR?



*Critical probes should be sterilized, or can also be high level disinfected and used with a sterile sheath. Note: The use of a sheath does not negate the need for HLD.¹

Making the choice simple
For outstanding ultrasound probe HLD compliance.

trophon® EPR

nanosonics
Infection Prevention. For Life.

Why HLD?

The Guidelines

The Spaulding Classification forms the basis for multiple US guidelines.

HLD is recommended by the Centers for Disease Control and Prevention (CDC) as the minimum standard in ultrasound probe reprocessing for critical and semi-critical procedures (i.e. intracavitary and surface ultrasound probes that contact mucous membranes or non-intact skin).

The Food and Drug Administration (FDA) requires that a reusable medical device be properly reprocessed between patients to prevent infection, and applies the Spaulding Classification.

Ensure you comply

- The FDA requirements are legally binding
- The CDC and other guidelines are enforced by multiple organisations including the Centers for Medicare & Medicaid Services (CMS) and The Joint Commission (TJC)
- Following the correct probe disinfection/sterilization requirements ensures you maintain the highest standards in patient safety
- Compliance with the TJC's Infection Prevention and Control Standard is an important factor in maintaining your healthcare facility accreditation
- Compliance is required for CMS health care reimbursement

Protecting probes after HLD

Correct storage of ultrasound probes is a crucial reprocessing step. Recontamination of probes after HLD is possible, as probes are routinely handled by staff and exposed to the environment before being used again.

Using a storage cabinet is a good idea to further protect from recontamination, however a probe cover should still be used. Probes should be protected from the time they are HLD, right up until they are used again on the next patient.

Nanosonics' Clean Ultrasound Probe Covers protect intracavity and surface ultrasound probes from the risk of recontamination through handling or the environment after high level disinfection (HLD). They protect the entire probe including the handle.

Learn more at
www.nanosonics.us/probecovers



Making the
choice simple
For outstanding ultrasound
probe HLD compliance.

trophon® EPR

nanosonics
Infection Prevention. For Life.